



Photo: A. McRobb, RBG-Kew



Montserrat Centre Hills Project

Enabling the people of Montserrat to conserve
the Centre Hills





Photo: A. McRobb, RBG-Kew





Photo: A. McRobb, RBG-Kew





Photo: A. McRobb, RBG-Kew

Montserrat Forest Reserve

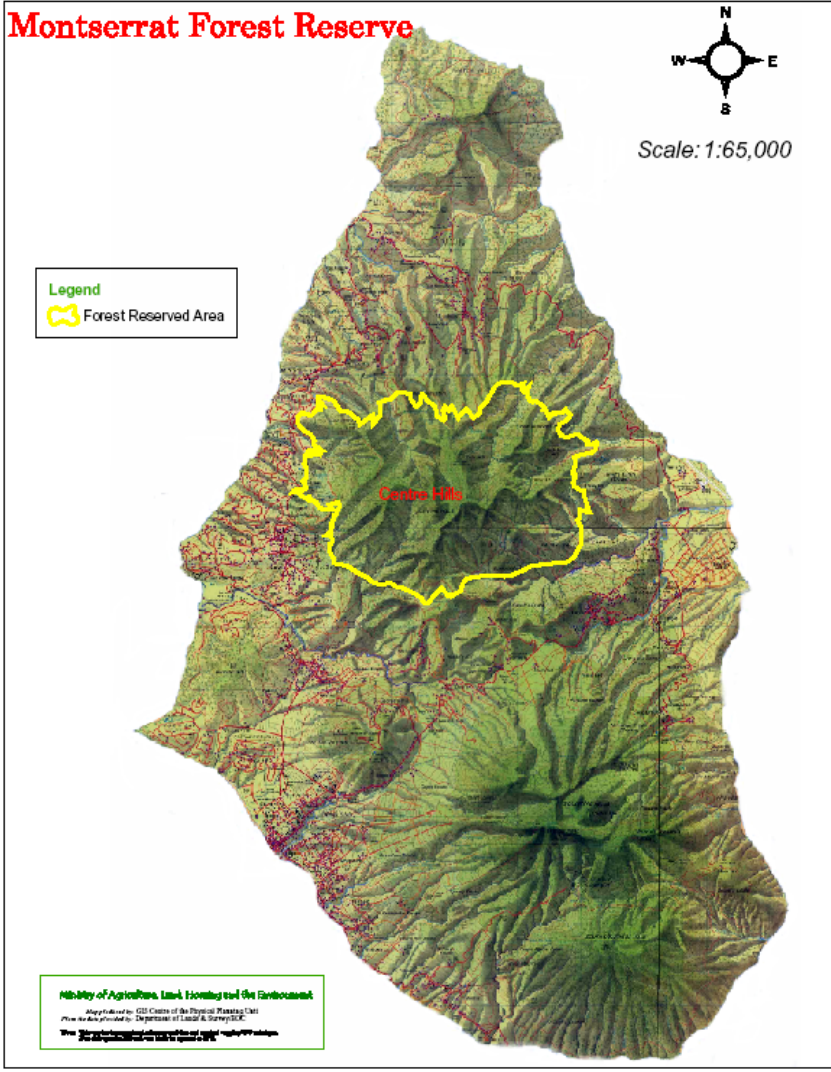




Photo: A. McRobb, RBG-Kew



Photo: A. McRobb



Importance

Since volcanic crisis began in 1995 the Centre Hills are last viable enclave for most endemic/globally threatened wildlife



Photo: A. McRobb, RBG-Kew



Importance

- Springs found within Centre Hills provide 100% of public water supply
- The Centre Hills provide protection from severe weather events



Photo: A. McRobb, RBG-Kew



Importance

- Numerous socioeconomic uses including tourism, collection of non timber products and hunting
- Farming and livestock production on boundary



Photo: A. McRobb, RBG-Kew



The people of Montserrat are better able to take targeted action to conserve the Centre Hills



Photo: A. McRobb, RBG-Kew



Photo: C. McCauley, CHP



Partners



Photo: A. McRobb, RBG-Kew

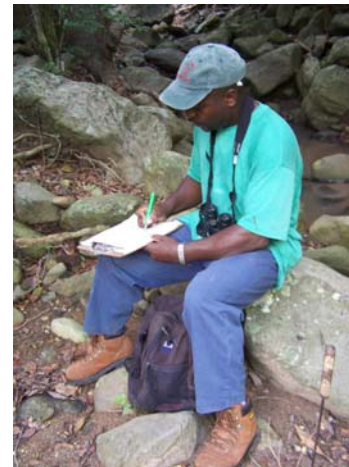




Photo: A. McRobb, RBG-Kew

Legacy

Leaving a framework in place so the Centre Hills are not only conserved now but also in the future after the Darwin project is completed





Photo: A. McRobb, RBG-Kew

1. Ensuring there is sound knowledge to develop a management plan

- Biological Assessment - Abundance and distribution of key species
- Socio-economic Assessment - Surveys to assess knowledge, attitudes, behaviours
- GIS - boundary, landownership, habitat maps
- Ecological Research - impact of invasives and water extraction

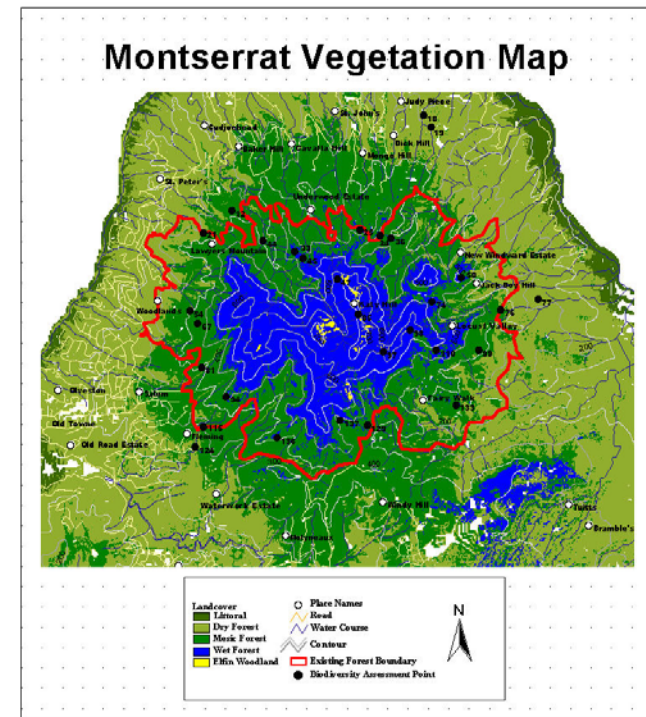




Photo: A. McRobb, RBG-Kew

2. Development of a 'participatory' management plan

- CANARI brought in to develop a participatory process and outreach plan
- Establishment of Centre Hills Management Committee
- Workshops
- Expert groups, E-group





Photo: A. McRobb, RBG-Kew

3. Integrating management plan objectives into government policies and plans

- Dept. of Environment (MALHE) will be responsible for plan implementation
- Integrating objectives into government department workplans
- Funding





Photo: A. McRobb, RBG-Kew

4. Revising legislation so the Centre Hills can be designated a National Park

- Rationale - outdated environmental legislation
 - Does not include recent research findings about threatened species and habitats
 - Does not include attention to obligations of MEAs and other international frameworks
 - Inadequate attention to enforcement issues
- Process
 - Review of existing legislation
 - Extensive consultation with resource managers, resource users, land owners, and the general public. Particular focus on outreach with political leaders
 - Drafting of new or revised legislation
 - Attorney General's Office to take forward approval process





Photo: A. McRobb, RBG-Kew

5. Strengthening technical and professional skills on Montserrat

- A local project manager and two field officers working full time for the project
- Local consultants undertook socio-economic surveys
- On-the-job training
- Participation in local, regional and international workshops and conferences





Photo: A. McRobb, RBG-Kew

6. Increasing local/international appreciation for the Centre Hills

- Website
- Newsletters
- Leaflet / poster
- Resources for teachers and students
- Fieldguide to the Centre Hills
- Other materials for specific target audiences (e.g., farmers, politicians, etc.)





Photo: A. McRobb, RBG-Kew

Challenges

- Ashfall/Volcano
- Land development pressure due to resettlement
- Land ownership issues
- Human capacity
- Endorsement of legislation





Photo: A. McRobb, RBG-Kew

Opportunities

- Kew partnering with the Montserrat National Trust to develop a botanic garden
- Montserrat Centre Hills featuring in the BBC 'Year at Kew'
- Relationship with other govt departments (GIS, AG office)
- Leveraging funds from OTEP to support legislative review. Waiting to hear about economic valuation





Photo: A. McRobb, RBG-Kew

Contact information



Centre Hills Project
c/o Montserrat National Trust
P.O. Box 393
Oveston
Montserrat

centrehills@candw.ms

www.malhe.gov.ms/centrehills

