

**NORTHERN RANGELANDS TRUST**

**UNIVERSITY OF CAMBRIDGE**

**OL PEJETA CONSERVANCY**

**DARWIN INITIATIVE**

**SAVE THE ELEPHANTS**

**LAIKIPIA WILDLIFE FORUM**

**CETRAD**  
Centre for Training and Integrated Research in ASAL Development

**Development Fund**

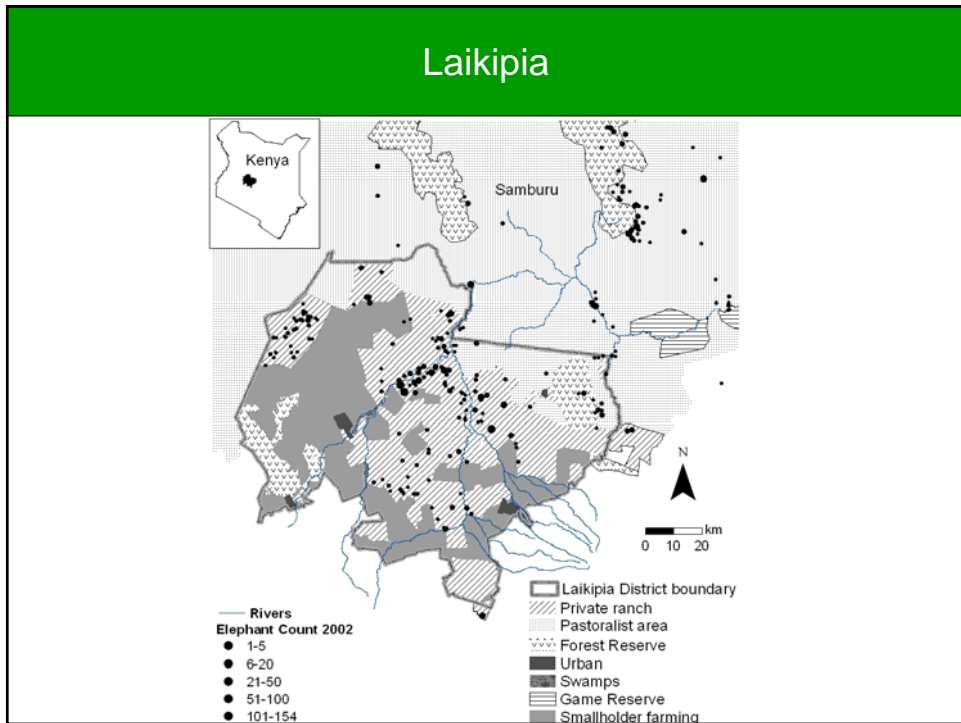
**Safaricom**  
the better option

**Darwin Initiative Project 15/040:**

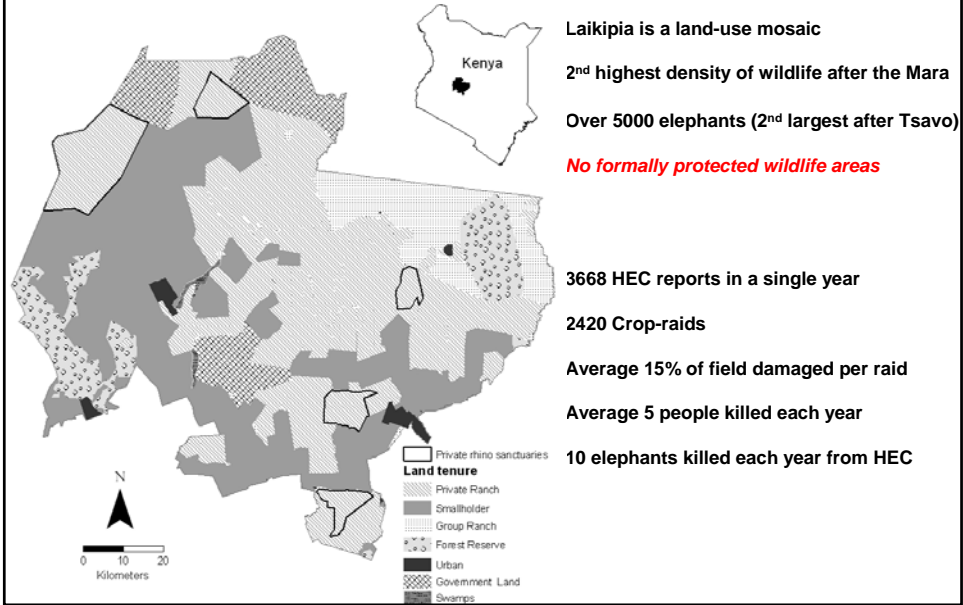
**Building Capacity to Alleviate Human-Elephant Conflict in North Kenya**

*The Symbiosis Trust*

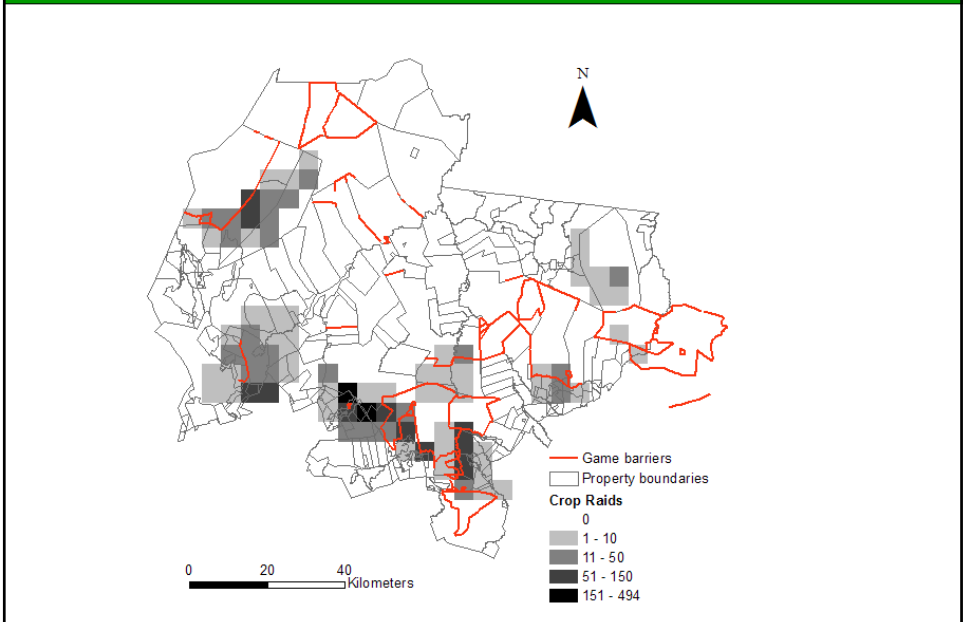
**Partnerships for Alleviating Human-Elephant Conflict in North Kenya**  
Arusha Darwin Initiative Meeting  
November 06 2008



# Laikipia



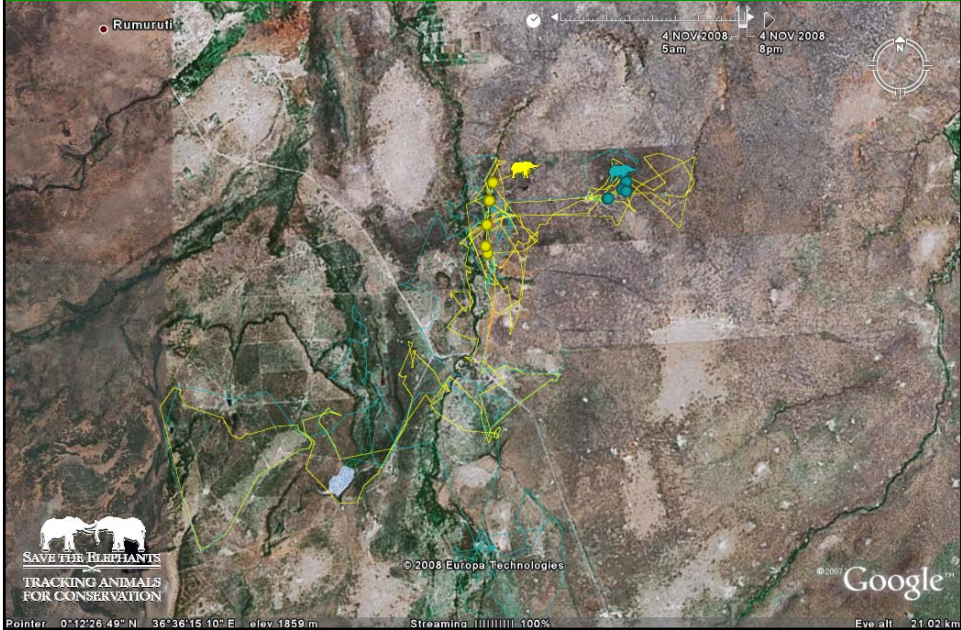
# Human-Elephant Conflict



# Project 15/040: Early Warning Systems



# Project 15/040: E-Fence



## Project 15/040: Push-to-Talk



## Project 15/040: Crop-Raiding Deterrents



### Passive Methods

- Buffer Zone
- Alarm System
- Chilli Fence

### Active Methods

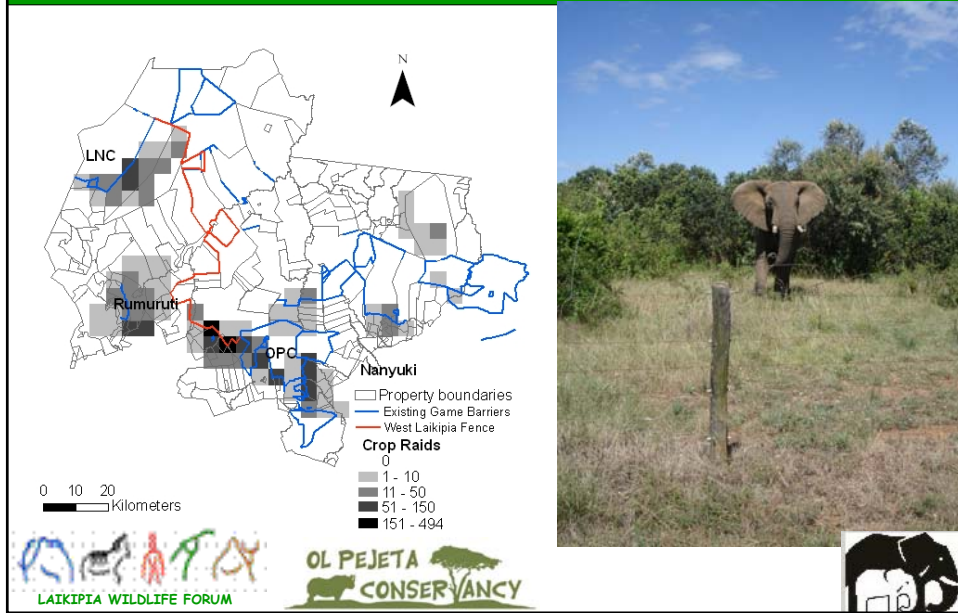
- Chilli Dung Smoke
- Noise Makers
- Bright Lights



Graham, M.D. and Ochieng, T. (2008). Uptake and performance of farm-based measures for reducing crop-raiding by elephants *Loxodonta africana* among smallholder farms in Laikipia District, Kenya. *Oryx* 42, 76-82.



## Project 15/040: West Laikipia Fence



## Project 15/040: Elephant Compatible Livelihoods



•Elephant Dung Paper

•Chilli Production

•Honey



## Project 15/040: Training & Community Education



### Training

- ✓ Formal courses
- ✓ On the job training
- ✓ Support for 2 x master's degrees



### Community Education

- ✓ Drama Performances
- ✓ Community Comic Books
- ✓ School Essay Competition
- ✓ Posters



## Partnerships: The Good, The Bad and the Ugly



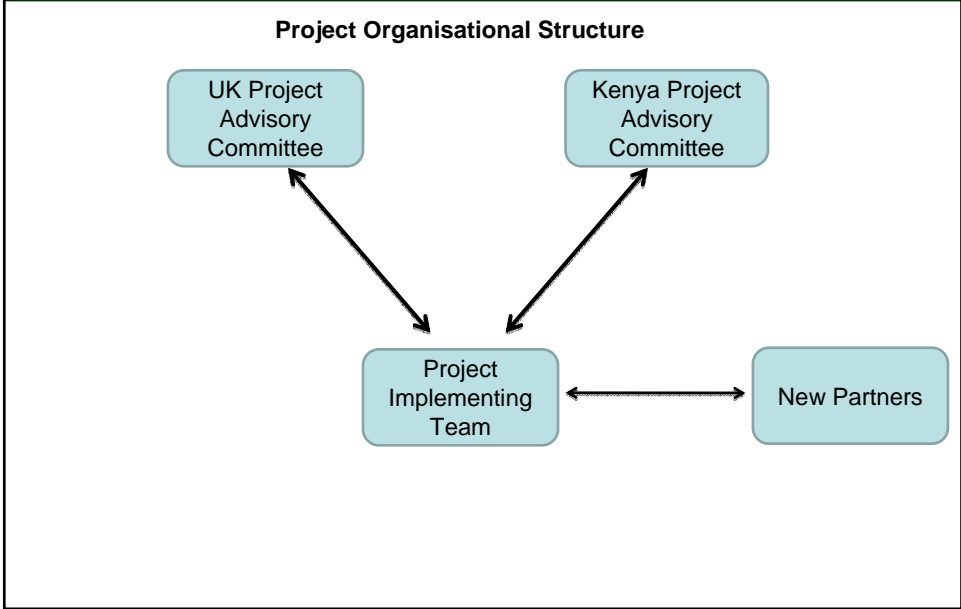
**Darwin Initiative Project  
15/040:**



**Building Capacity to  
Alleviate Human-Elephant  
Conflict in North Kenya**



# Partnerships: Organisational Structure



# Project Partners: International

- **International Partners**
  - ✓ Well resourced
  - ✓ Well connected
  - ✓ Enhance project profile
  - ✗ Ownership and branding of outputs
  - ✗ Quick to report success
  - ✗ Poor local capacity
  - ✗ Competing interests

## Project Partners: Local

- **Local Partners**

- Government**

- ✓ Enable the project to be implemented
    - ✓ Endorsement enhances project credibility
    - ✓ Open to outside technical support and new approaches
    - ✓ Keen on training
    - ✓ Strong local presence
    - ✗ High turnover of staff
    - ✗ Poor internal communication
    - ✗ Limited resources makes follow up and sustainability an issue
    - ✗ Sensitive to criticism
    - ✗ Bureaucratic

## Project Partners: Local

- **Local Partners**

- NGOs**

- ✓ Permanent local staff
    - ✓ Willing to share/pool resources
    - ✓ Good understanding of local context
    - ✓ Easy to collaborate with to achieve common goals
    - ✗ Small core team (can be stretched)
    - ✗ Small funding base/tight budgets
    - ✗ Unwilling to take on new responsibilities
    - ✗ Slow to implement internal change



## Project Partners: Corporate

- ✓ High level of project management skills
- ✓ Target orientated
- ✓ Well resourced and potential source of long term funding
- ✓ Understand sustainability/long term viability
- ✗ Potentially Exploitive
- ✗ Insensitive to local context/issues
- ✗ Quick to report success
- ✗ Branding/ownership of outputs